

RAK473/476 Use Guidance

Obtain Module IP, MAC and Firmware Version Information

Shenzhen Rakwireless Technology Co., Ltd.

www.rakwireless.com

info@rakwireless.com

© RAK copyright. All rights reserved.

Companies and product names referred in the instruction belong to trademarks of their respective owners.

Any part of this document may not be reproduced, and may not be stored in any retrieval system, or delivered without RAK's written permission.

The document will be updated without prior notice.

1. Obtain Module IP, MAC and Firmware Version Information

1.1 Overview

In this part, some methods to obtain module IP, MAC and firmware version information are introduced.

1.2 Operating instruction

Tips:

1. When the command control module is sent via MCU, the characters "\r\n" are as the ending characters for the command;
 2. When the command control module is sent via the serial port tool, press the Enter key as the ending character for the command;
 3. The information returned following the command can be presented in ASCII code for easy viewing. If the information display is not comprehensive or garbled, there may be special characters, Chinese characters and so on in the returned information, so please view in the hexadecimal form.
- Please bear in mind the points above, which will not be repeated any more.

1.3 Obtain module IP information (The module must be connected to the network)

1. Make sure that the module has been connected to the network.
2. Module serial port is connected to the computer, to send commands via the serial port.
3. Send the command to set ASCII display. Open the ASCII display (Figure 1-2) (This step can also be omitted, and access directly hexadecimal system mode to view) (Figure 1-1).

Send: at+ascii=1\r\n

Return: OK

4. Send the command for querying IP information of the module, to query current IP information of the module (MAC address, IP address, subnet mask, gateway and DNS server).

Send: at+ipconfig\r\n

Return: OK.....

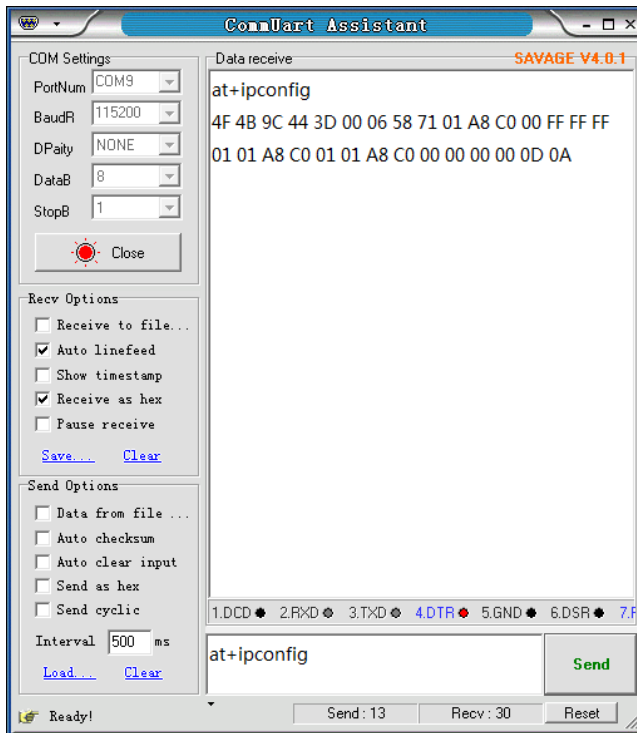


Figure 1-1 Hexadecimal system display

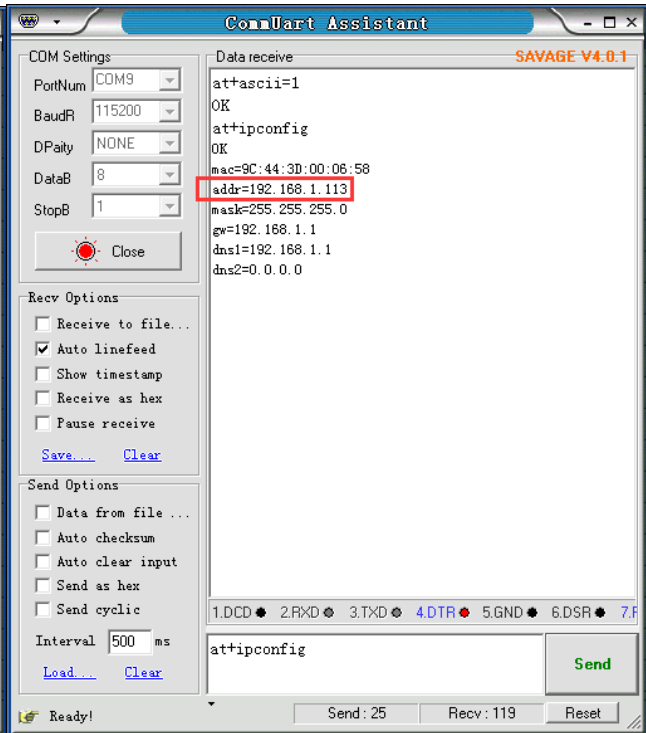


Figure 1-2 ASCII display

1.4 Obtain module MAC and firmware version information

1. Make sure that the module is powered up. (At this time, it is unnecessary for the module to connect to the network)
2. Send the command for setting ASCII display. Open the ASCII display (Figure 1-3), (This step can also be omitted, and access directly hexadecimal system mode to view).

Send: at+ascii=1\r\n

Return: OK

3. Send the command for querying MAC.

Send: at+mac\r\n

Return: OK+MAC

4. Send the command for querying the firmware version.

Send: at+version\r\n

Return: OK+ firmware version

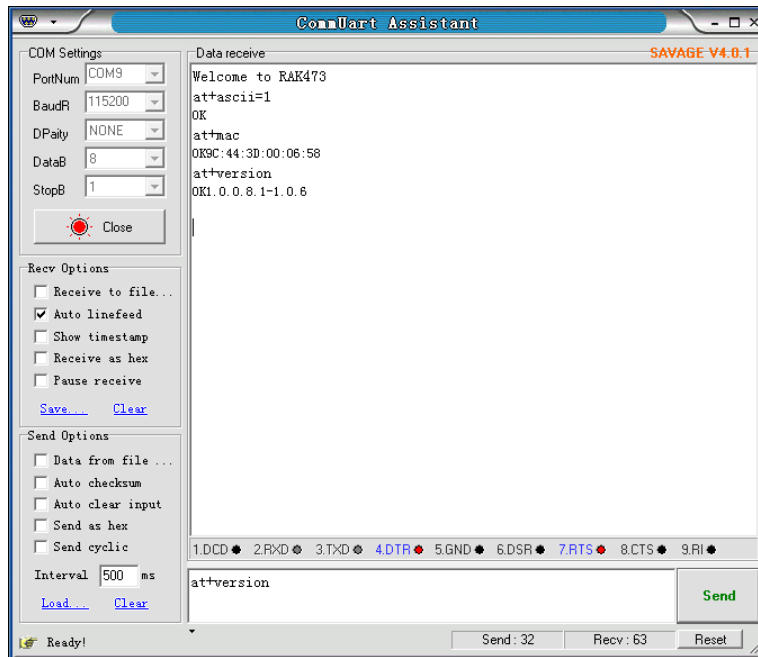


Figure 1-3 Query module MAC and firmware version information

Version

Version	Author	Date	Content modification
V1.0	Lianbo Wang	2016/02/03	Create a document
V1.1	Xiaocheng Cao	2016/10/22	Modify some of the details